



15 Months on Managing Windows Servers with Windows Admin Center

Jan-Tore Pedersen



Jan-Tore Pedersen

Senior Consultant @ GTGlobal

<https://jtpedersen.com>

Twitter:jantorep





Who is using Windows Admin Center?



Lightweight & fast deployment



Access from anywhere!

Internet connection not required



Internet



On-Premises

Publish to DNS
& open firewall

Client browser



Connect from a modern browser

HTTP
S

Web server



Gateway

Windows
Admin
Center



~60 MB installer, install in minutes

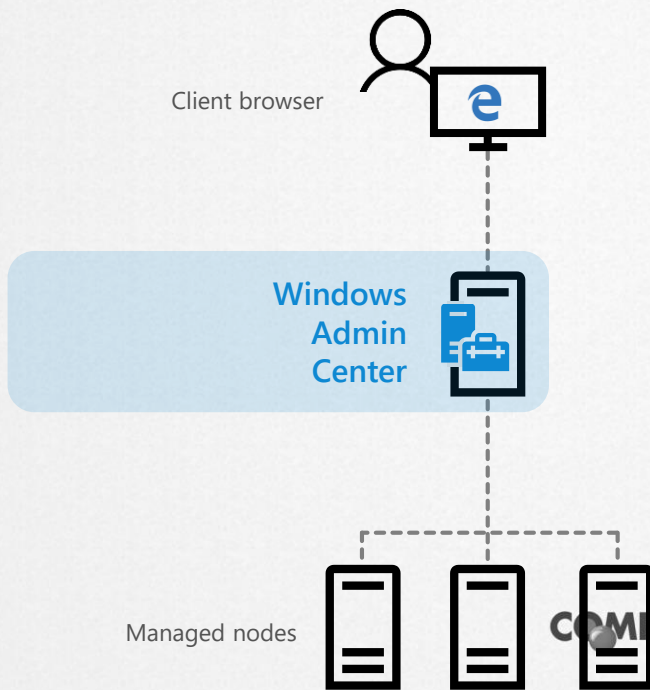
PowerShell / WMI over WinRM

Managed nodes

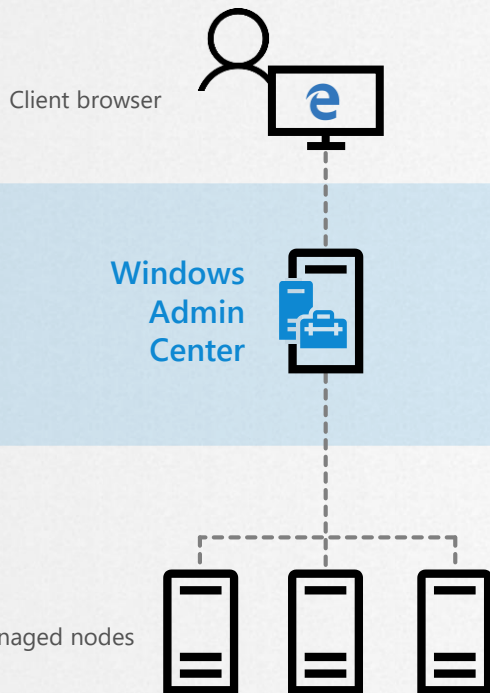


No agent installation required

Lightweight & fast deployment



Lightweight & fast deployment



Access from

Microsoft Edge
Google Chrome

Install on

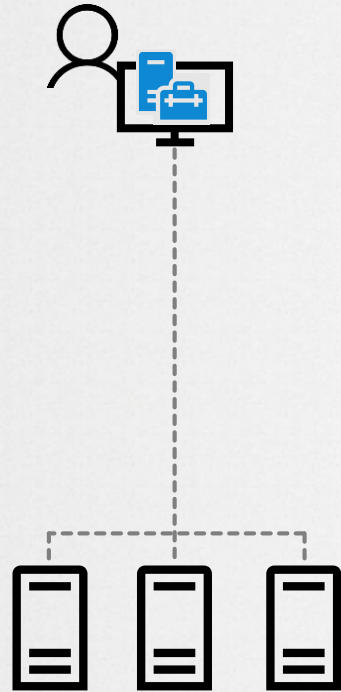
Windows Server (Semi-Annual Channel)
Windows Server 2019
Windows Server 2016
Windows 10

Manage

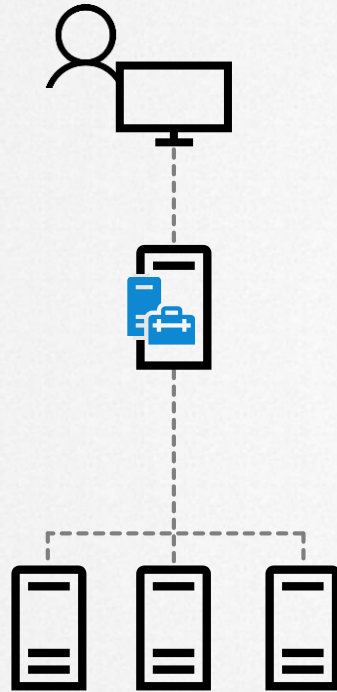
Windows Server (Semi-Annual Channel)
Windows Server 2019
Windows Server 2016
Windows Server 2012 R2
Windows Server 2012
Windows Server 2008 R2
Windows 10



Lightweight & fast deployment



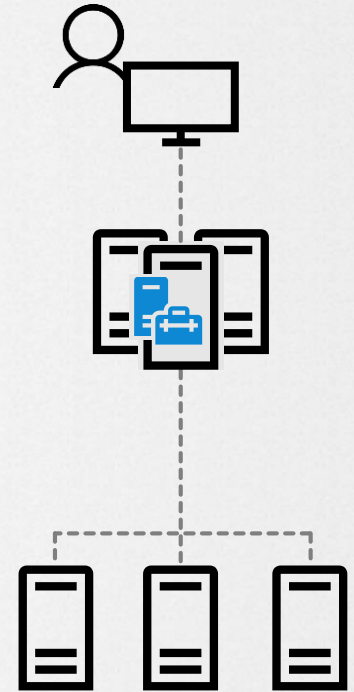
Windows 10 desktop



Dedicated gateway server



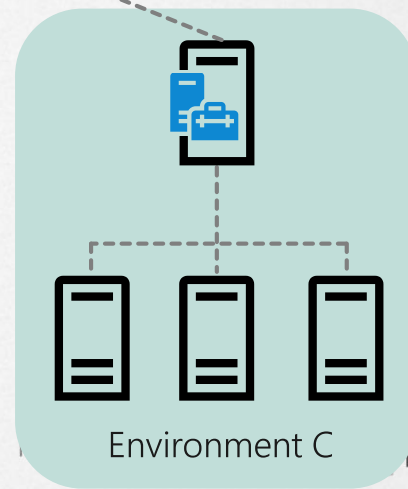
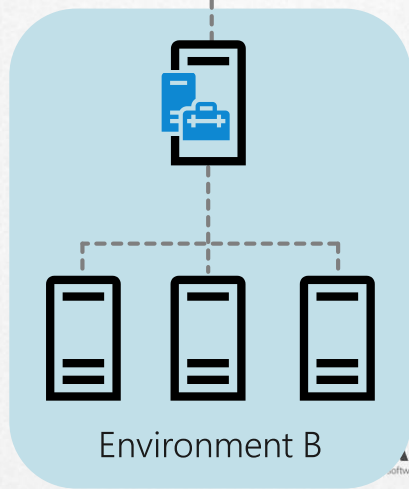
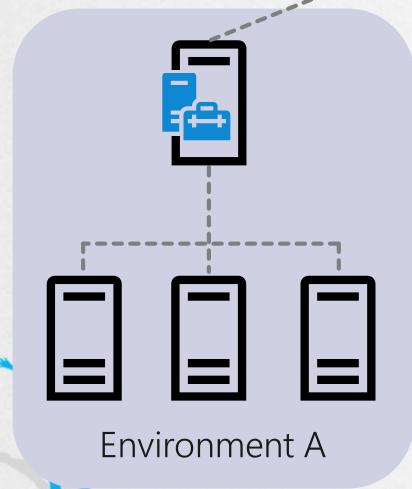
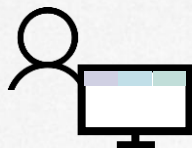
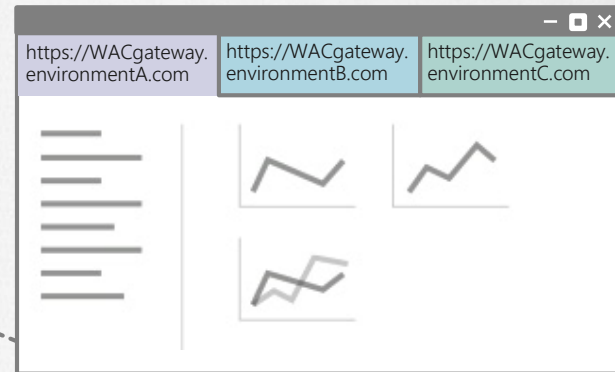
Managed node



High availability

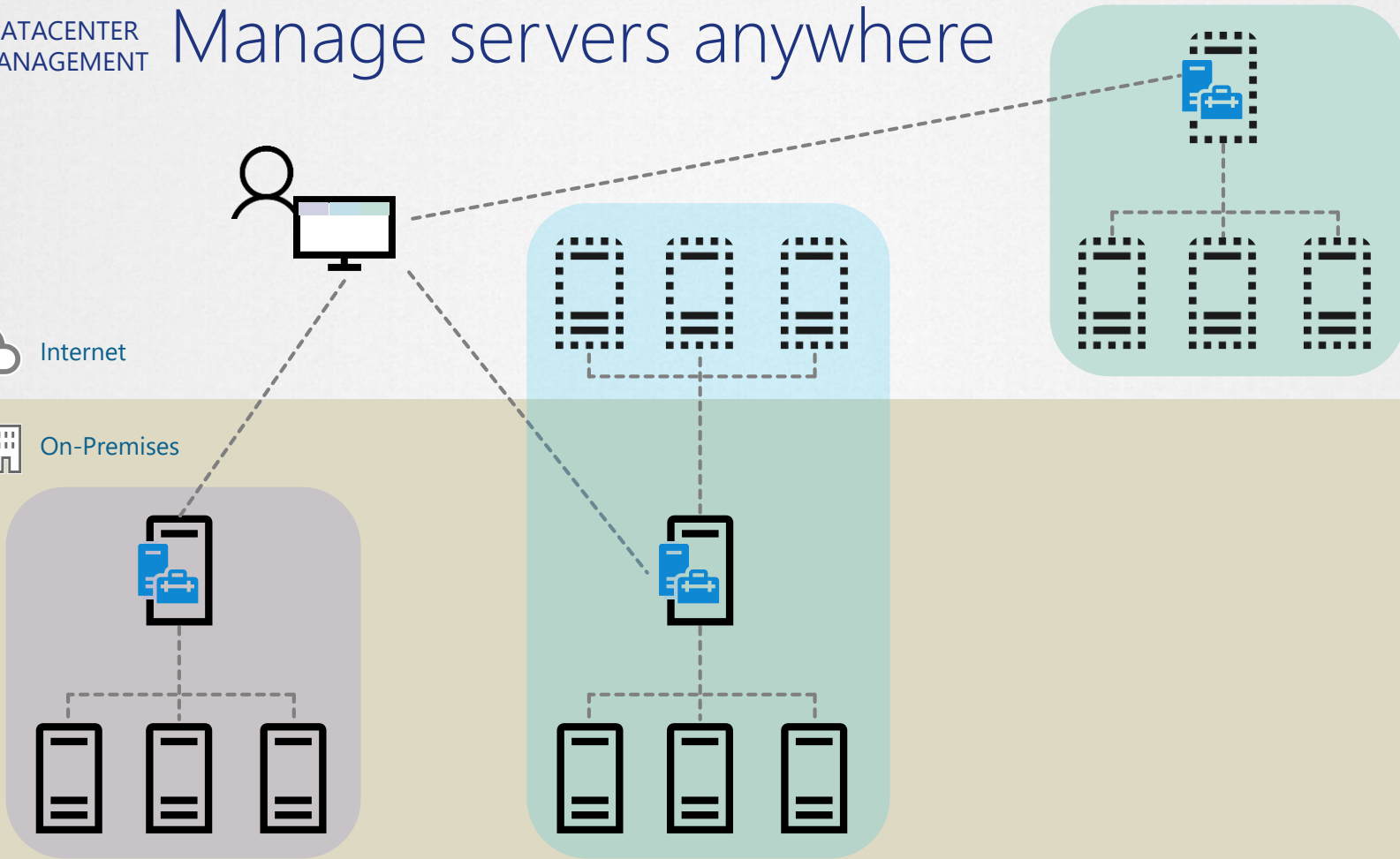


Manage multiple environments



Manage servers anywhere

Internet
On-Premises



Protection at two layers



Secure access to Windows Admin Center

- HTTPS communication
- Active Directory & local groups
- Multi-factor authentication & conditional access with Azure Active Directory



Secure access to managed servers

- Role-based access control (RBAC)
- Delegation for single sign-on
- Local administrator password solution (LAPS)





How Does it look?

Demo



All your servers & clusters



Windows Server (SAC)
Windows Server 2019
Windows Server 2016
Windows Server 2012 R2
Windows Server 2012
Windows Server 2008 R2
Windows 10

All your tools



Overview	Registry
Certificates	Remote Desktop
Devices	Roles and Features
Events	Scheduled Tasks
Files	Services
Firewall	Storage
Local Users and Groups	Storage Replica
Network	Updates
PowerShell	Virtual Machines
Processes	Virtual Switches



Troubleshooting, configuration, and maintenance

Servers

- Overview
- Apps & Features
- Certificates
- Devices
- Events
- Files
- Firewall
- Local Users & Groups
- Networks
- PowerShell
- Processes
- Registry
- Remote Desktop
- Roles & Features
- Scheduled Tasks
- Services
- Storage
- Storage Migration Service
- Storage Replica
- System Insights
- Updates
- Virtual Machines
- Virtual Switches
- Settings

Failover clusters

- Overview
- Disks
- Networks
- Overview
- Settings
- Virtual Machines
- Virtual Switches

Hyper-converged clusters

- Dashboard
- Virtual Machines
- Virtual Switches
- Servers
- Volumes
- Drives
- Virtual Networks
- SDN Monitoring
- Settings



Feature tour

Demo



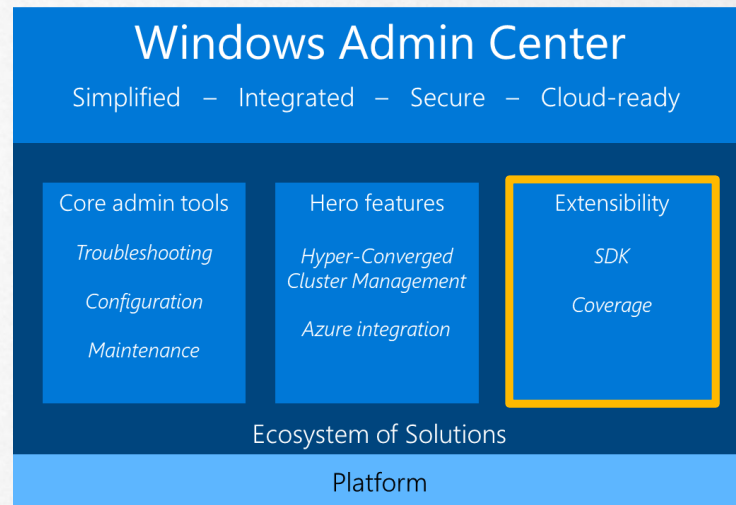
Extensibility

Windows Admin Center is a platform and extensibility has been built in from the beginning

Working with partners to build out ecosystem of solutions and tools

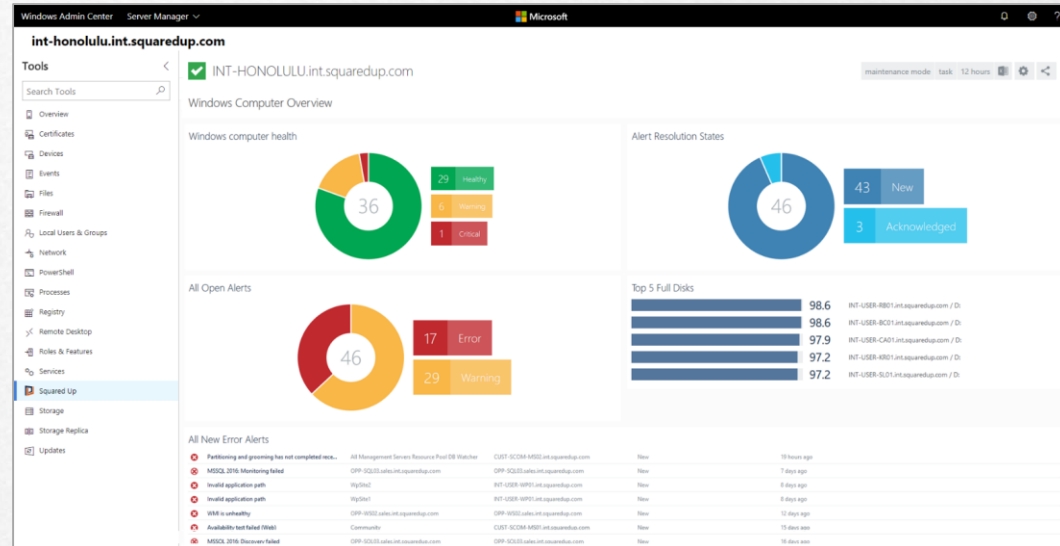
Information about the SDK is available from Windows Admin Center documentation site.

SDK download available on GitHub



Third-party extensions

- Lenovo – xClarity
- Squared Up – Server Perspective for SCOM
- DataON – MUST – Hyper converged admin
- Fujitsu – ServerView Health
- More coming...





Extensions

Demo



Windows Admin Center 1904

- Shared Connections
- AD Directory, DNS, DHCP Tool
- Dark Mode
- Containers Tool
- Azure Hybrid Services
- Azure Monitor
- Azure File Sync
- + + + + + lot's more
- <https://techcommunity.microsoft.com/t5/Windows-Admin-Center-Blog/Windows-Admin-Center-1904-GA-update-is-now-available/ba-p/443407>





What should you use WAC for?

Let me show you what i use in WAC when i do deployments





DATACENTER MANAGEMENT





Thank's for joining





Next Session 13:30 – 14:30

Hardening Windows Server

Orin Thomas